



6727 Langley Ave  
St. Louis, MO 63123  
Phone: 314-352-9920

## Directions

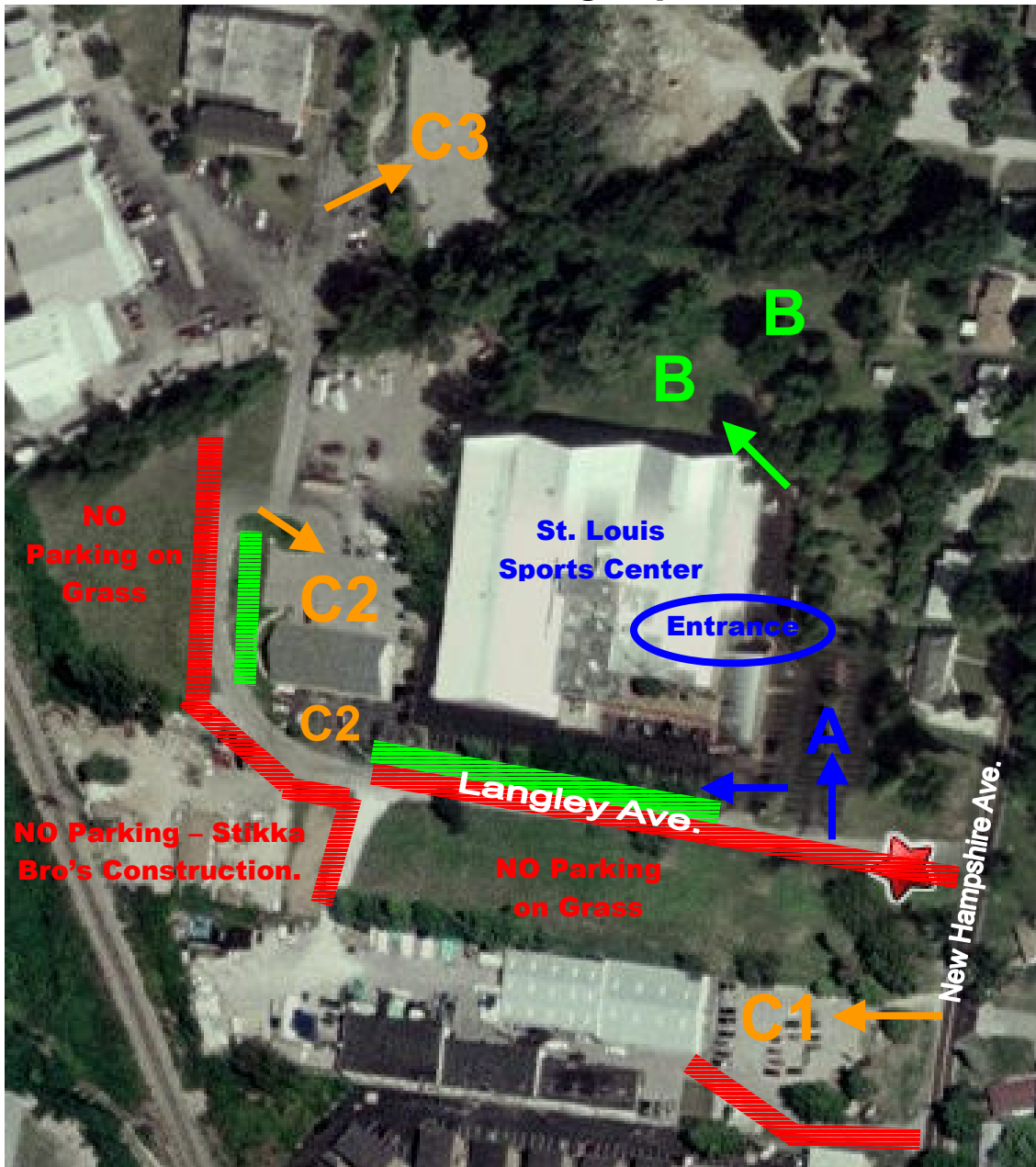
- **Hwy 44 to Elm.** Go south on Elm to Watson Rd. Make a left onto Watson Rd. Take Watson Rd. to Laclede Station Rd. Make a right on Laclede Station Rd., then an immediate left onto Heege Rd. Go .5 miles (just after Tower Tee Golf) and make a right on New Hampshire. Make a right onto Langley and St. Louis Sports Center will be on right.
  - **Hwy 270 to Gravois.** Go east on Gravois for about 3.5 miles. Turn left on New Hampshire, next to Affton Lawncare (just past Tesson Ferry and before you go under RR bridge). Follow New Hampshire for about .6 miles. St. Louis Sports Center is on left off of Langley.
  - **Hwy 55 to Reavis Barracks.** Exit going west on Reavis Barracks. Reavis Barracks will turn into Mackenzie as it wraps around a bend. So, continue on Mackenzie to Heege Rd. Make a left onto Heege Rd. Follow Heege Rd. to the top of the hill (just before Tower Tee Golf) and make a left onto New Hampshire. Make a right onto Langley and club will be on right.
  - **Illinois Crossing JB Bridge.** Hwy 270 to Tesson Ferry. Exit going north (right) on Tesson Ferry. Take Tesson Ferry about 3-4 miles to Gravois. Take Gravois east (right). Turn left on New Hampshire, next to Affton Lawncare (just before you go under RR bridge). Follow New Hampshire for about .6 miles. St. Louis Sports Center is on left off of Langley.
- 



## Policies & Facility Layout

- No Outside Food or Drink.
- No Coolers.
- Side entrance is the main entrance.
- Children must be supervised.
- Concession stand available.
- Bleachers are set-up in front of each court.
- Restrooms are available next to concession stand & in the locker rooms.
- Please adhere to the aerial parking map and all parking signage when parking at the St. Louis Sports Center and additional parking lots. Cars parked illegally, specifically on the grass of other private businesses, will be ticketed.

**Aerial Parking Map**



**A – St. Louis Sports Center Parking Lot.**

Parallel parking available on the St. Louis Sports Center side of Langley Ave. (Labeled as green bar; red bar signifies NO parking). No parking in fire lanes (follow signage). Do not block **Grass Lot (B)** entrance.

**B – St. Louis Sports Center Grass Lot (Weather Permitting).**

Grass parking is available during daytime hours on weather permitting days. Be mindful of blocking in other vehicles.

**C# – Weekend Only Parking**

**C1 – Weber Parking Lot (Only Available Certain Weekends - Fri after 6 PM, Saturday/Sunday all day)**

Absolutely NO parking on grass. Do not block Weber's gate. Violators can be ticketed/towed. Be mindful of blocking in other vehicles.

**C2 – Bommarito Parking Lots (Only Available Certain Weekends - Fri after 6 PM, Saturday/Sunday all day)**

Two lots (front & back). Do not block any of the gates (back lot & off Langley). Violators can be ticketed/towed. Be mindful of blocking in other vehicles.

**C3 – Extel Parking Lot (Only Available Certain Weekends - Fri after 6 PM, Saturday/Sunday all day)**

NO parking on grass. Do not block any dumpsters, equipment, etc. Be mindful of blocking in other vehicles.